

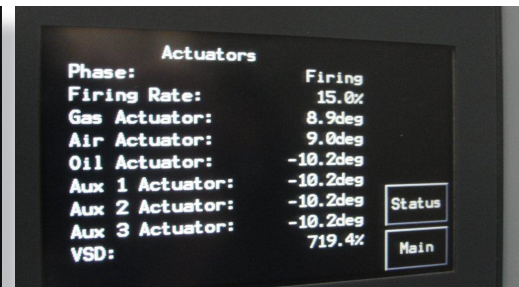
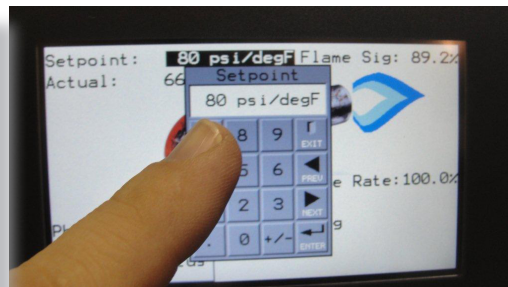
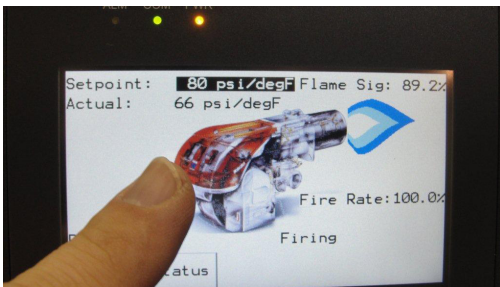
# Touch Screen Controls

Riello R Series burners equipped with the Siemens LMV Linkageless control system offer efficient operation and combustion repeatability.

McCotter Energy Systems offers an optional easy-to-use touch screen control interface.



- Touch screen control option fit to the Riello burner with Siemens LMV system.
- Easy to read touch screen panel provides operating information, fault history, burner status and set point adjustment.



R Series Gas and Dual Fuel Burners



# Slide Out Assembly

All Riello R Series burners are designed with innovative slide bars which enable the burner assembly to be pulled outwards, allowing quick access to the combustion head for easy set-up and servicing, resulting in lower start-up and maintenance costs.



Slide Out Assembly



Easy Access to Combustion Head



**R Series Gas and Dual Fuel Burners**

